

PEPPERS



Originators of Concession Nachos



Nutrition Facts

Serving Size: 1/4 cup (30g)
Servings per Container: about 128

Amount per Serving

Calories 0 Fat Calories 0

% Daily Value*

Total Fat 0g

Saturated Fat 0g

Trans Fat 0g

Cholesterol 0mg

Sodium 250mg

Total Carbohydrate 0g

Dietary Fiber 1g

Sugar 0g

Protein 0g

Vitamin A 2%

Vitamin C 0%

Calcium 0%

Iron 0%

Ingredients: Jalapeño Peppers, Water, Salt, Acetic Acid, Citric Acid, Spices, Sodium Benzoate, Potassium Sorbate, Natural Flavors, Sodium Metabisulfite and Citric Acid.



Originators of Concession Nachos

SLICED
Jalapeños



Net Wt 128 Fl oz (1 Gal) 3.78 L



RIC21119

1 gal Jalapeño Jar
Nacho Slices



Originators of Concession Nachos.

1 gal Jalapeño Jar Nacho Slices

Product Specifications

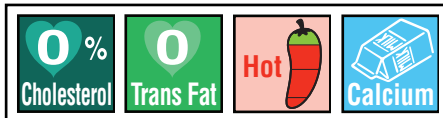
PRODUCT CODE	ITEM BARCODE CASE BARCODE	PACK SIZE	ITEM DIM (LxWxH) CASE DIM (LxWxH)	CUBE	Tl x Hi	NET WT CASE WT	CASES/ PALLET	SHELF LIFE
1gal Jalapeño Jar Nacho Slices	079426211192 RIC21119 10079426211199	4/128oz	6"x6"x9.75" 12.5"X13"X9.75"	.92	12x4	32 lbs 39 lbs	48	9 months

Features

Ricos Jalapeno Nacho Slices are the #1 jalapeno in a re-sealable 1-gallon plastic jar. Ricos Jalapenos have a crisp and zesty taste that will enhance the flavor of many foods, especially your favorite dishes. They have been grown under the finest climatic conditions in Mexico to provide you with the highest quality, best tasting peppers available anywhere. Pleasantly hot!

JALAPEÑO PEPPERS, WATER, SALT, VINEGAR, CALCIUM CHLORIDE

Ingredients



Nutritionals

Nutrition Facts

Serving Size 3 oz (30g)
Servings per Container about 128

Amount per Serving

Calories 5 Calories from Fat 0

%Daily Value*

Total Fat 0g **0%**

Saturated Fat 0g **0%**

Trans Fat 0g

Cholesterol 0mg **0%**

Sodium 510mg **21%**

Total Carbohydrate 1g **0%**

Dietary Fiber 0g **0%**

Sugars 0g

Protein 0g

Vitamin A 6% • Vitamin C 4%

Calcium 42% • Iron 4%

*Percent Daily Values are based on a 2,000 calorie diet. Your daily values may be higher or lower depending on your calorie needs:

	Calories	2,000	2,500
Total Fat	Less than	65g	80g
Sat Fat	Less than	20g	25g
Cholesterol	Less than	300mg	300mg
Sodium	Less than	2,400mg	2,400mg
Total Carbohydrate		300g	375g
Dietary Fiber		25g	30g

Calories per gram:

Fat 9 • Carbohydrates 4 • Protein 4

ITEM



CASE

